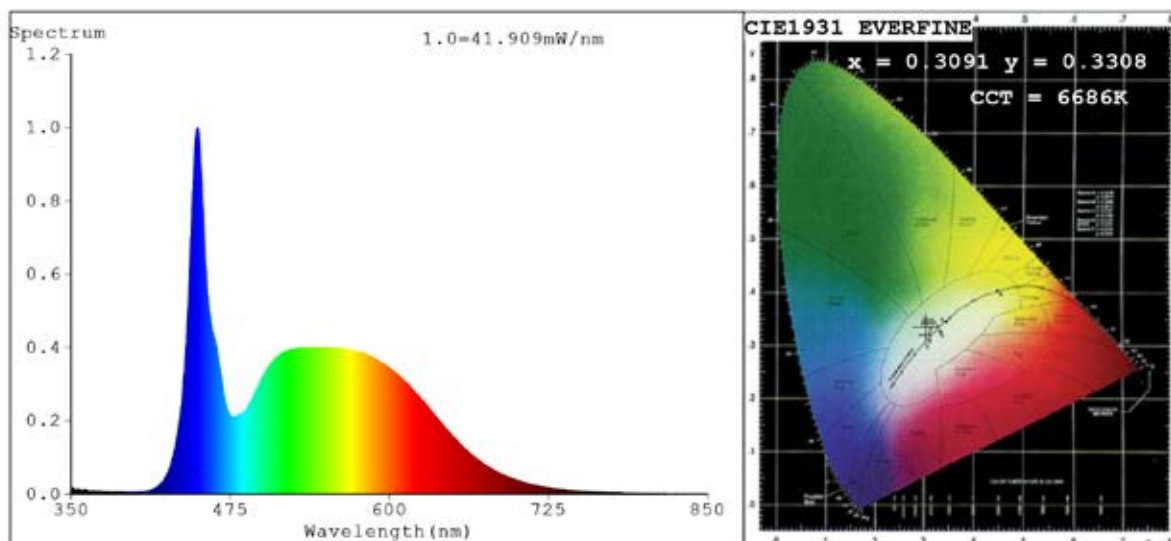


## Spectrum Test Report



### Color Parameters:

Chromaticity Coordinate:  $x=0.3091$   $y=0.3308$   $u'=0.1947$   $v'=0.4688$   
 CCT=6686K(Duv=0.0059) Dominant WL:Ld =490.4nm Purity=8.4%  
 Ratio:R=13.2% G=81.1% B=5.7%;;Peak WL:Lp=449.5nm FWHM=17.0nm  
 Render Index:Ra=83.9 CRI=76.6 TM30:Rf=83 Rg=94  
 R1 =82 R2 =87 R3 =91 R4 =84 R5 =83 R6 =83 R7 =89  
 R8 =72 R9 =10 R10=70 R11=84 R12=59 R13=83 R14=96 R15=77

### Photo Parameters:

Flux = 1102 lm Eff. : 125.77 lm/W Fe = 3.582 W

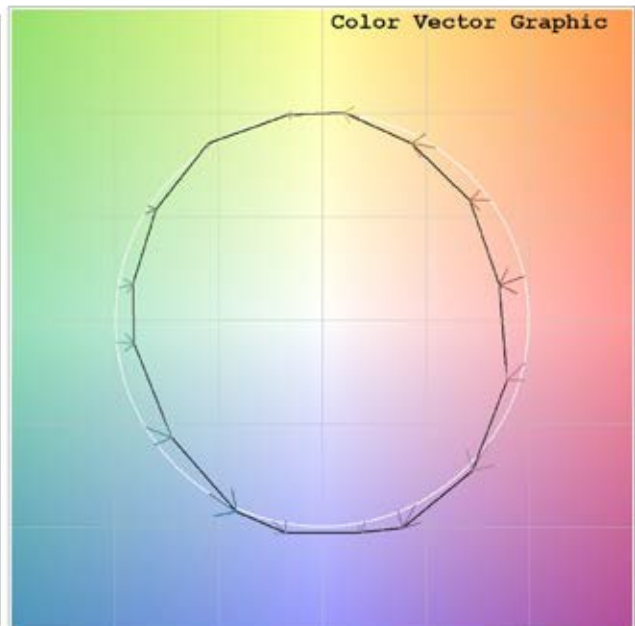
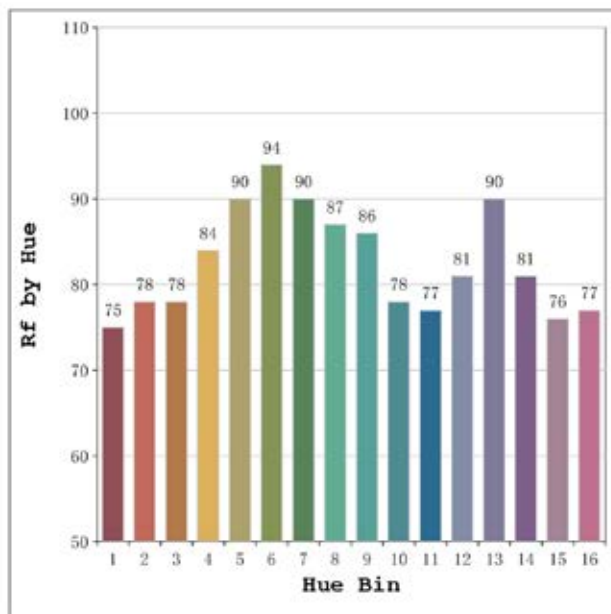
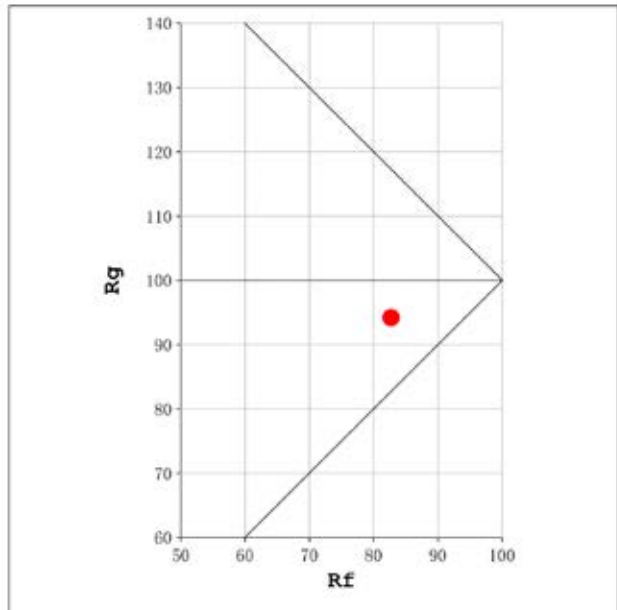
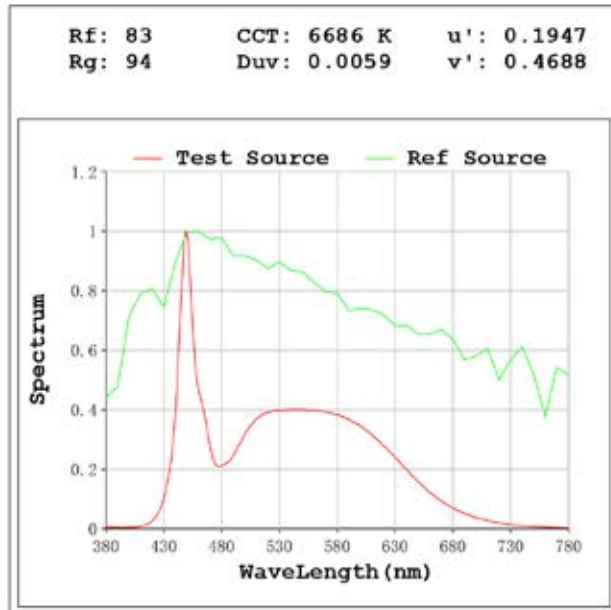
### Electrical parameters:

V = 23.998 V I = 0.3650 A P = 8.759 W PF = 1.000

Status: Integral T = 873 ms Ip = 42655 (65%)

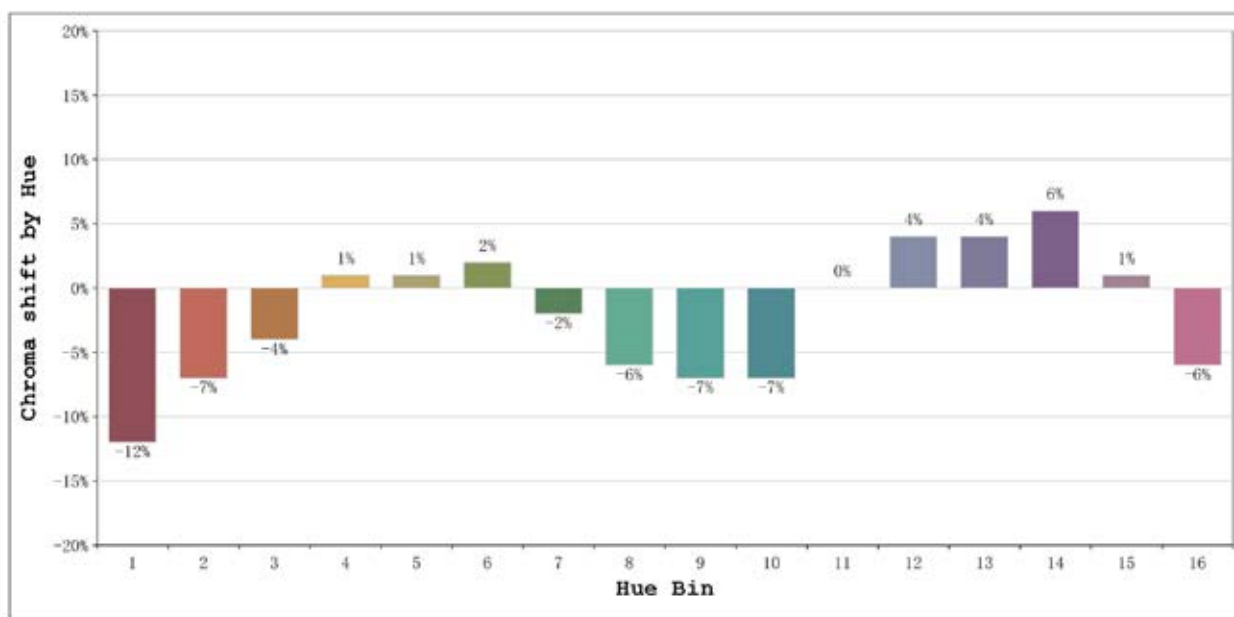
Model:Panel Flexible TW  
 Tester:Sergio Carneros  
 Temperature:20Deg  
 Manufacturer:Luz Negra

Number:46.002 CW  
 Date:2026-05-19 14:41:04  
 Humidity:50%  
 Remarks:1 Panel flexible CCT



Model:Panel Flexible TW  
 Tester:Sergio Carneros  
 Temperature:20Deg  
 Manufacturer:Luz Negra

Number:46.002      CW  
 Date:2026-05-19 14:41:04  
 Humidity:50%  
 Remarks:1 Panel flexible CCT

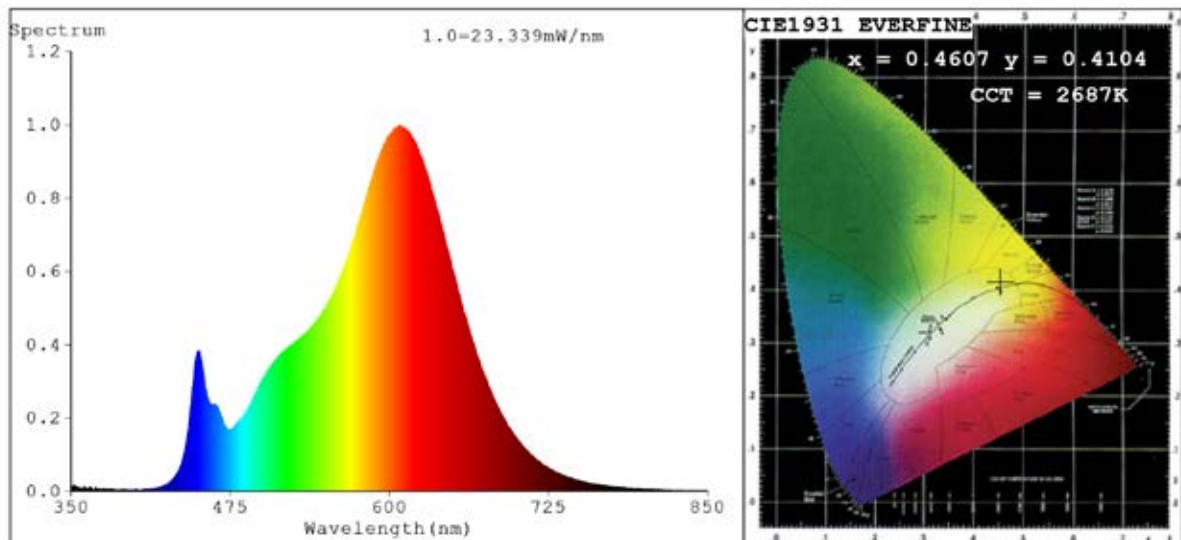


			Graphic shift(%)	
Hue Bin	Hue Angle	Rf	Chroma	Hue
1	0.0° - 22.5°	75	-12	-1
2	22.5° - 45.0°	78	-7	5
3	45.0° - 67.5°	78	-4	11
4	67.5° - 90.0°	84	1	8
5	90.0° - 112.5°	90	1	3
6	112.5° - 135.0°	94	2	-1
7	135.0° - 157.5°	90	-2	-3
8	157.5° - 180.0°	87	-6	-2
9	180.0° - 202.5°	86	-7	2
10	202.5° - 225.0°	78	-7	11
11	225.0° - 247.5°	77	0	16
12	247.5° - 270.0°	81	4	7
13	270.0° - 292.5°	90	4	-2
14	292.5° - 315.0°	81	6	-10
15	315.0° - 337.5°	76	1	-14
16	337.5° - 360.0°	77	-6	-9

Model:Panel Flexible TW  
 Tester:Sergio Carneros  
 Temperature:20Deg  
 Manufacturer:Luz Negra

Number:46.002 CW  
 Date:2026-05-19 14:41:04  
 Humidity:50%  
 Remarks:1 Panel flexible CCT

## Spectrum Test Report



### Color Parameters:

Chromaticity Coordinate:  $x=0.4607$   $y=0.4104$   $u'=0.2631$   $v'=0.5274$   
 CCT=2687K (Duv=-0.0002) Dominant WL:Ld =584.3nm Purity=61.5%  
 Ratio:R=25.7% G=71.8% B=2.5%;;Peak WL:Lp=607.8nm FWHM=108.1nm  
 Render Index:Ra=84.4 CRI=80.6 TM30:Rf=84 Rg=95  
 R1 =84 R2 =95 R3 =93 R4 =83 R5 =85 R6 =95 R7 =81  
 R8 =59 R9 =12 R10=89 R11=85 R12=83 R13=87 R14=97 R15=75

### Photo Parameters:

Flux = 1031 lm Eff. : 118.54 lm/W Fe = 3.197 W

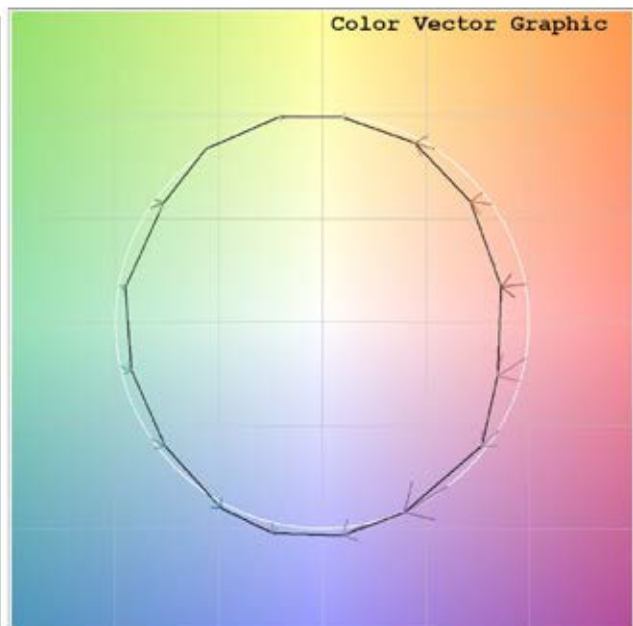
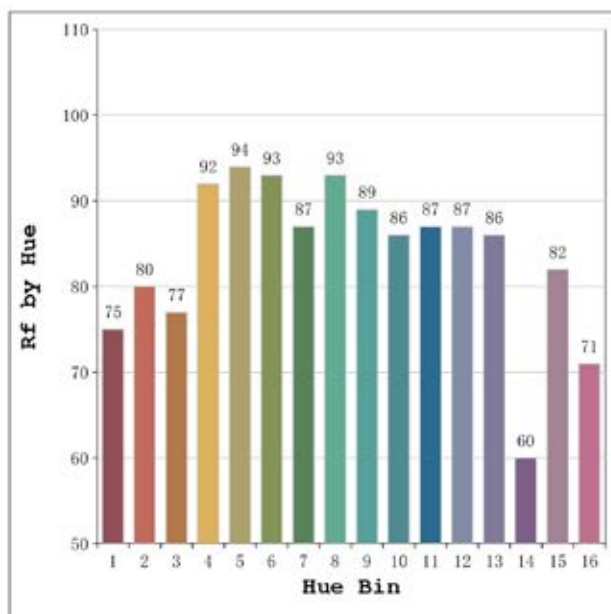
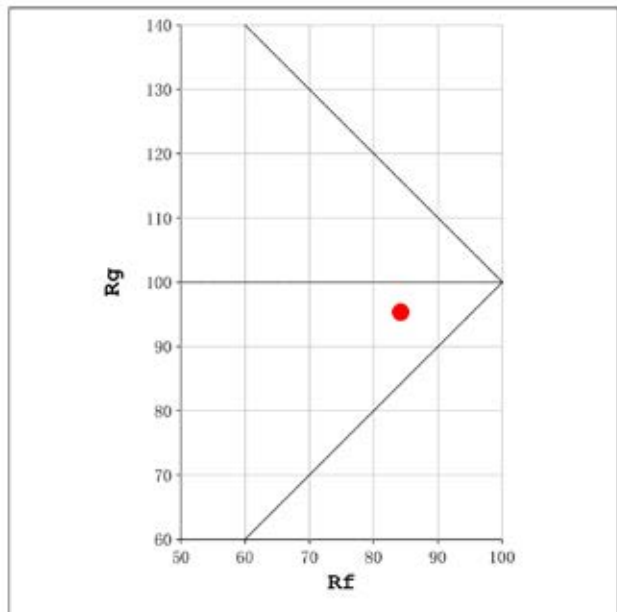
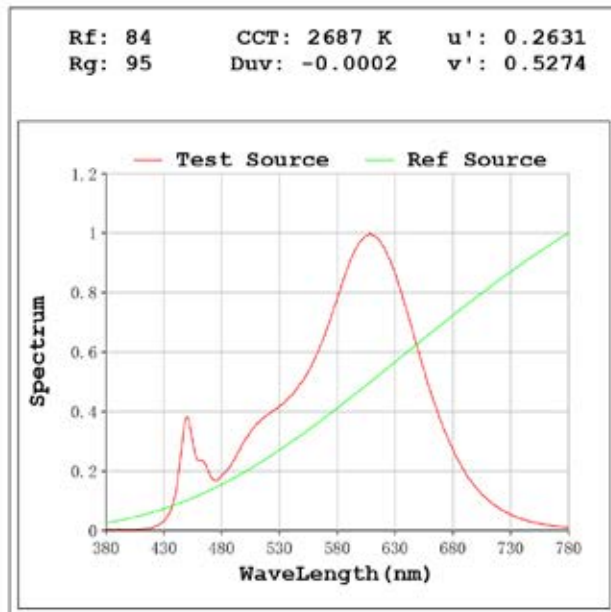
### Electrical parameters:

V = 23.998 V I = 0.3626 A P = 8.702 W PF = 1.000

Status: Integral T = 873 ms Ip = 38637 (59%)

Model:Panel Flexible TW  
 Tester:Sergio Carneros  
 Temperature:20Deg  
 Manufacturer:Luz Negra

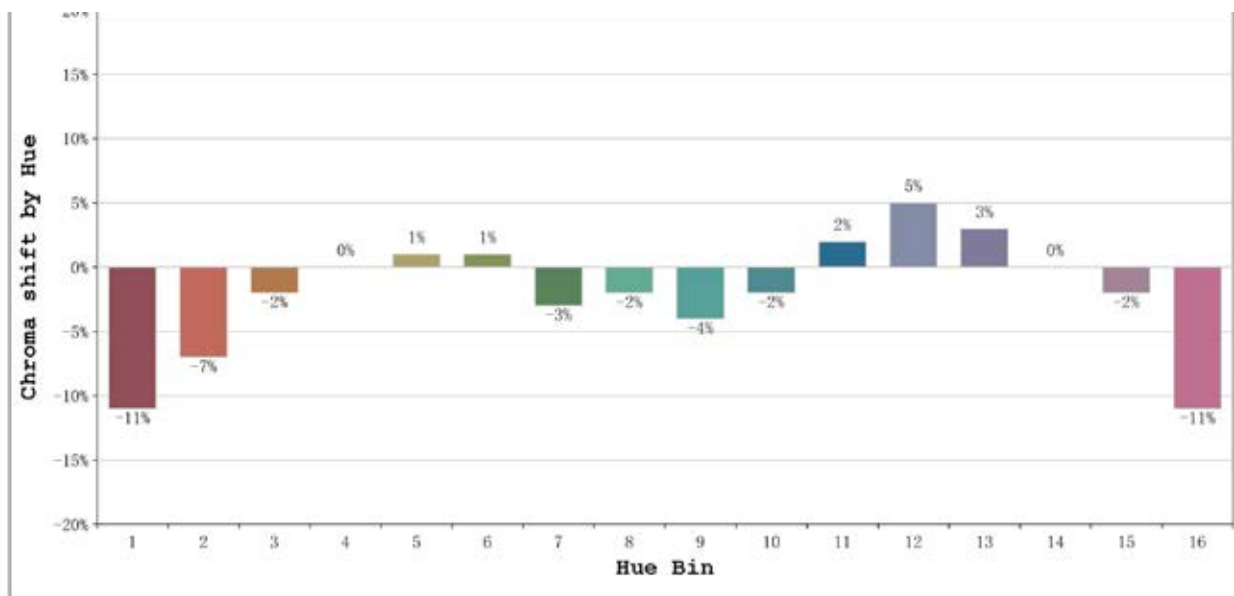
Number:46.002 WW  
 Date:2026-05-19 14:43:25  
 Humidity:50%  
 Remarks:1 Panel flexible CCT



Model:Panel Flexible TW  
 Tester:Sergio Carneros  
 Temperature:20Deg  
 Manufacturer:Luz Negra

Number:46.002    WW  
 Date:2026-05-19 14:43:25  
 Humidity:50%  
 Remarks:1 Panel flexible CCT



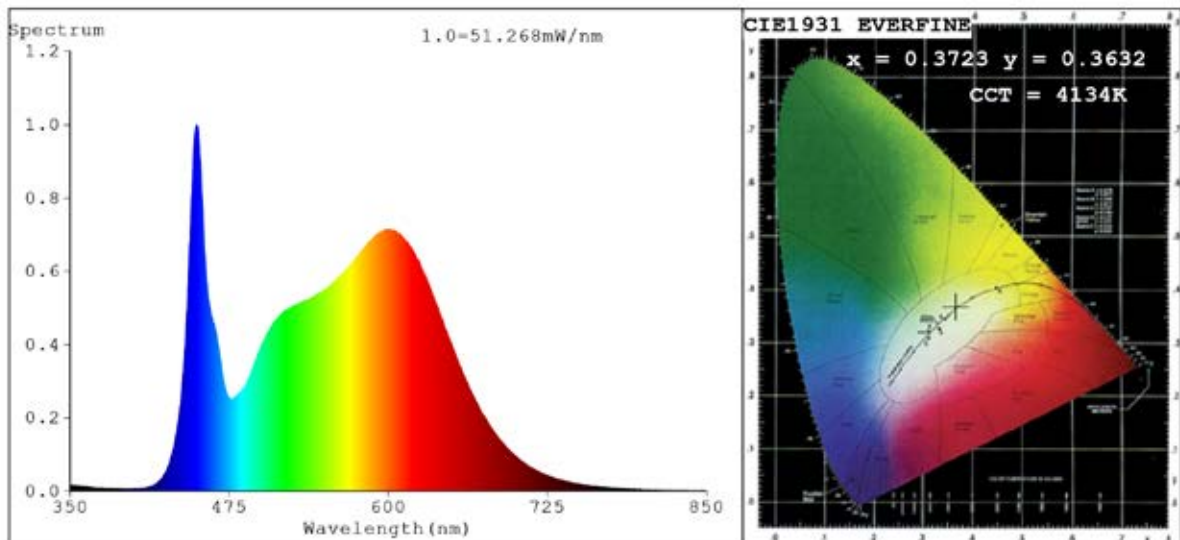


			Graphic shift(%)	
Hue Bin	Hue Angle	Rf	Chroma	Hue
1	0.0° - 22.5°	75	-11	1
2	22.5° - 45.0°	80	-7	7
3	45.0° - 67.5°	77	-2	10
4	67.5° - 90.0°	92	0	4
5	90.0° - 112.5°	94	1	3
6	112.5° - 135.0°	93	1	0
7	135.0° - 157.5°	87	-3	-4
8	157.5° - 180.0°	93	-2	0
9	180.0° - 202.5°	89	-4	3
10	202.5° - 225.0°	86	-2	6
11	225.0° - 247.5°	87	2	7
12	247.5° - 270.0°	87	5	1
13	270.0° - 292.5°	86	3	-10
14	292.5° - 315.0°	60	0	-23
15	315.0° - 337.5°	82	-2	-10
16	337.5° - 360.0°	71	-11	-10

Model:Panel Flexible TW  
 Tester:Sergio Carneros  
 Temperature:20Deg  
 Manufacturer:Luz Negra

Number:46.002 WW  
 Date:2026-05-19 14:43:25  
 Humidity:50%  
 Remarks:1 Panel flexible CCT

## Spectrum Test Report



### Color Parameters:

Chromaticity Coordinate:  $x=0.3723$   $y=0.3632$   $u'=0.2252$   $v'=0.4943$   
 $CCT=4134K$  ( $Duv=-0.0040$ ) Dominant WL:  $L_d = 581.4nm$  Purity=20.7%  
 Ratio:  $R=19.1\%$   $G=76.7\%$   $B=4.2\%$ ; Peak WL:  $L_p=449.5nm$  FWHM=18.3nm  
 Render Index:  $R_a=88.9$   $CRI=84.5$   $TM30:R_f=86$   $R_g=98$   

$R_1 = 89$	$R_2 = 94$	$R_3 = 96$	$R_4 = 89$	$R_5 = 90$	$R_6 = 91$	$R_7 = 88$
$R_8 = 74$	$R_9 = 34$	$R_{10} = 86$	$R_{11} = 90$	$R_{12} = 72$	$R_{13} = 91$	$R_{14} = 99$ $R_{15} = 85$

### Photo Parameters:

Flux = 2110 lm    Eff. : 124.30 lm/W     $P_e = 6.724 W$

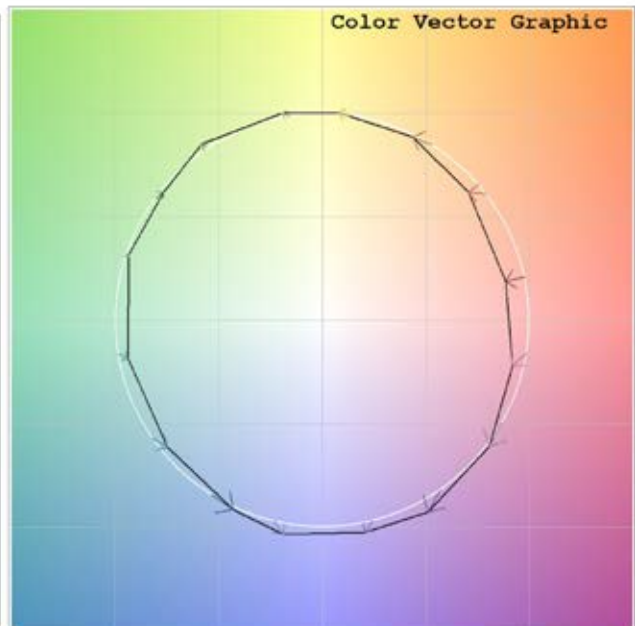
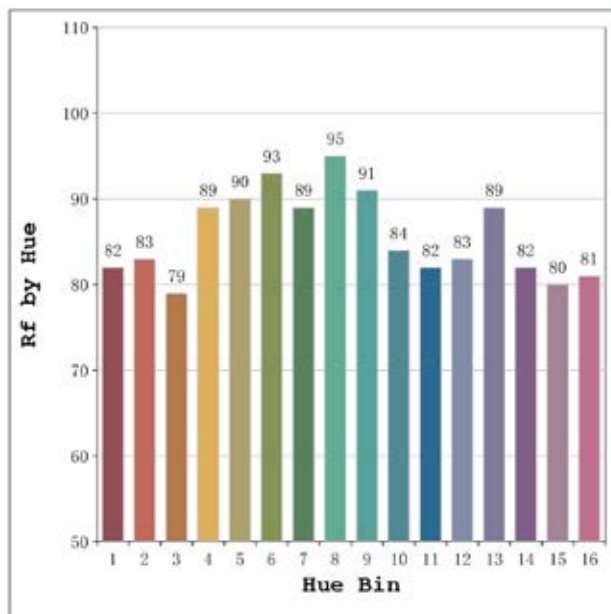
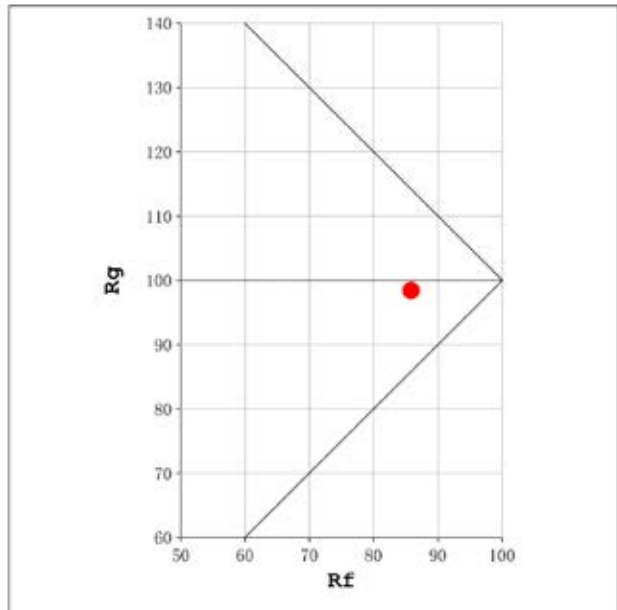
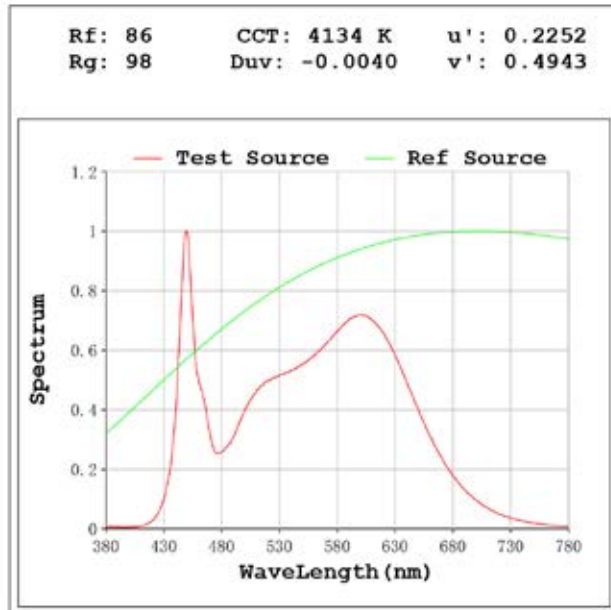
### Electrical parameters:

$V = 23.998 V$      $I = 0.7072 A$      $P = 16.97 W$   $PF = 1.000$

Status: Integral T = 696 ms     $I_p = 50113 (76\%)$

Model: Panel Flexible TW  
 Tester: Sergio Carneros  
 Temperature: 20Deg  
 Manufacturer: Luz Negra

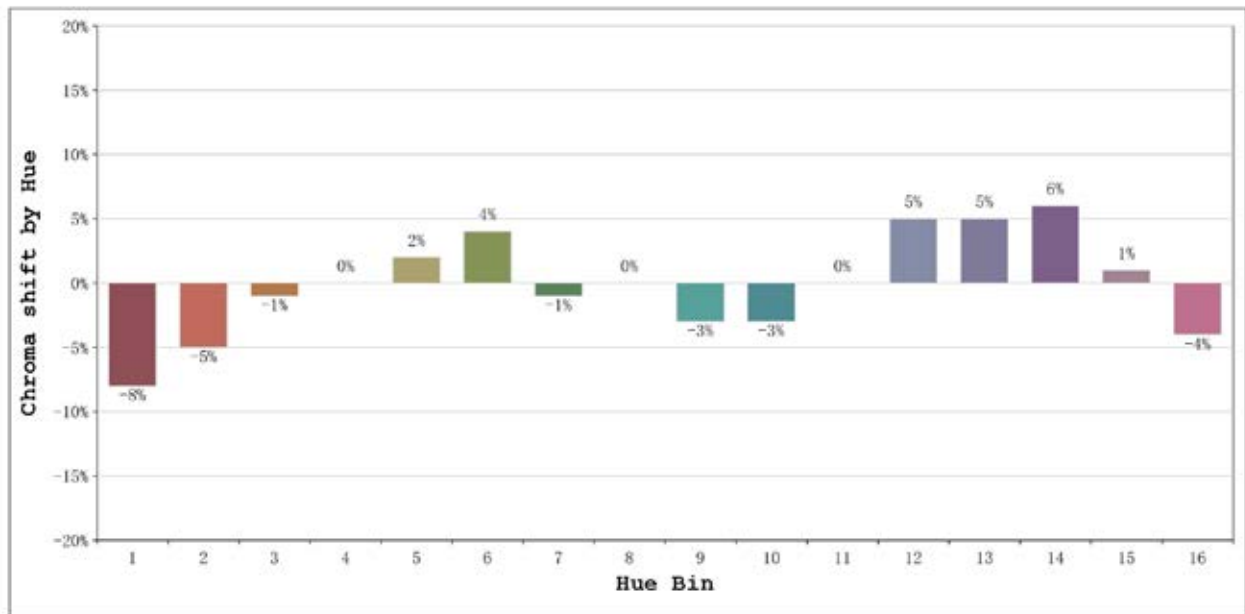
Number: 46.002    CW + WW  
 Date: 2026-05-19 14:45:53  
 Humidity: 50%  
 Remarks: 1 Panel flexible CCT



Model:Panel Flexible TW  
 Tester:Sergio Carneros  
 Temperature:20Deg  
 Manufacturer:Luz Negra

Number:46.002      CW + WW  
 Date:2026-05-19 14:45:53  
 Humidity:50%  
 Remarks:1 Panel flexible CCT





			Graphic shift(%)	
Hue Bin	Hue Angle	Rf	Chroma	Hue
1	0.0° - 22.5°	82	-8	0
2	22.5° - 45.0°	83	-5	6
3	45.0° - 67.5°	79	-1	10
4	67.5° - 90.0°	89	0	6
5	90.0° - 112.5°	90	2	4
6	112.5° - 135.0°	93	4	0
7	135.0° - 157.5°	89	-1	-4
8	157.5° - 180.0°	95	0	-1
9	180.0° - 202.5°	91	-3	3
10	202.5° - 225.0°	84	-3	8
11	225.0° - 247.5°	82	0	12
12	247.5° - 270.0°	83	5	5
13	270.0° - 292.5°	89	5	-4
14	292.5° - 315.0°	82	6	-10
15	315.0° - 337.5°	80	1	-12
16	337.5° - 360.0°	81	-4	-7

Model:Panel Flexible TW  
Tester:Sergio Carneros  
Temperature:20Deg  
Manufacturer:Luz Negra

Number:46.002 CW + WW  
Date:2026-05-19 14:45:53  
Humidity:50%  
Remarks:1 Panel flexible CCT